

# Delivering **EXCELLENCE**

in all we do.



## OUR VALUES

**OWNERSHIP | INTEGRITY | BUILDER | DIVERSITY | COMMUNITY**

**OWNERSHIP**  
We take responsibility. As an employee-owned company, we have a stake in everything we do.

**INTEGRITY**  
We work with integrity and are committed to honesty, building trust and doing the right thing. We provide a workplace free from hazards.

**BUILDER**  
We are builders. We safely self-perform our work while building teams, people, partnerships and legacies.

**DIVERSITY**  
We embrace diversity. From our people, to our partners, to our projects—these differences strengthen our teams and our business.

**COMMUNITY**  
We support our community. We care for our employees, colleagues and neighbors like a family.

APPLY ONLINE AT **HENSELPHELPS.COM/CAREERS**

Hensel Phelps is an Equal Opportunity and Affirmative Action Employer. Hensel Phelps shall not discriminate against any employee or applicant for employment on the basis of race, color, religion, including performance of religious obligations, age, weight, height, sex, sexual orientation, gender identity or transgender status, marital or domestic partner status, ancestry, national origin, disability or AIDS/HIV status, or protected veteran status in regard to any position for which the employee or applicant for employment is qualified, or because of association with members of classes protected in this policy or any other characteristic protected by federal, state, or local law.

**1,000+ EMPLOYEE OWNERS**

**EST. 1937**

**SUSTAINABILITY**

LEED Accredited Professionals **400+**  
**255+** Sustainable Projects

Engineering News-Record  
**TOP Green Builder**

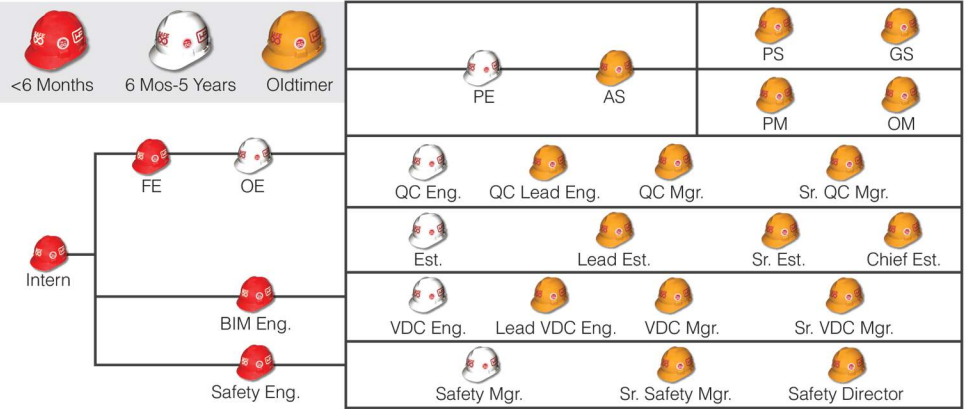


**ZEROACCIDENT SAFETY CULTURE**



**INTERNSHIPS**  
IN 2021 WE HIRED **256** INTERNS.

**\$1M ANNUAL CHARITABLE CONTRIBUTIONS & 100k SERVICE HOURS**



\* Above are options showing sample career paths. Each individual's progression may vary.

### Retirement

Qualified Retirement Plan  
Last year Hensel Phelps contributed **15%** of each employee's base salary.

### Healthcare

Last year Hensel Phelps paid **\$44.5M** for employees and their families' health coverage.

### Markets

Commercial, Aviation, Development, Healthcare, Education, Hospitality, Justice, Public, Mission Critical, Renewable, Facility Life Solutions

**236 PROJECTS IN PROCESS**

**\$5.2B+ PROJECTED REVENUE**